

Chain Valley and Mannering Collieries

Combined Community Consultative Committee
Meeting Presentation
16th November 2022



WELCOME AND APOLOGIES



Welcome

Apologies

Declaration of interests

Confirmation of previous minutes

- 1. Actions / Business Arising From Previous Minutes**
- 2. Correspondence**
- 3. Operations**
- 4. Approvals**
- 5. Landowner Notification**
- 6. Lease transfers**
- 7. Sev.en Energy**
- 8. Environmental Incidents / Non-compliances**
- 9. Environmental Performance**
- 10. Community Complaints & Enquiries**
- 11. Environmental Projects**

ACTIONS / BUSINESS ARISING FROM PREVIOUS MINUTES



Action / Business Arising	Action Owner	Update
Provide land ownership details of Delta Coal operational areas.	LM	Slide 29
Advise CCC when Consolidation Project is placed on public exhibition on DPE website.	LM	Slide 9
Provide a comparison of historic seagrass monitoring.	LM	Slides 30 – 37

Correspondence since previous meeting

- 21 September 2022
 - Email from Delta Coal/MMH to CCC regarding the proposed sale of Delta Electricity, including Delta Coal.
- 6 October 2022
 - Email from MMH to CCC regarding the review of the draft Community Consultative Committee Guideline

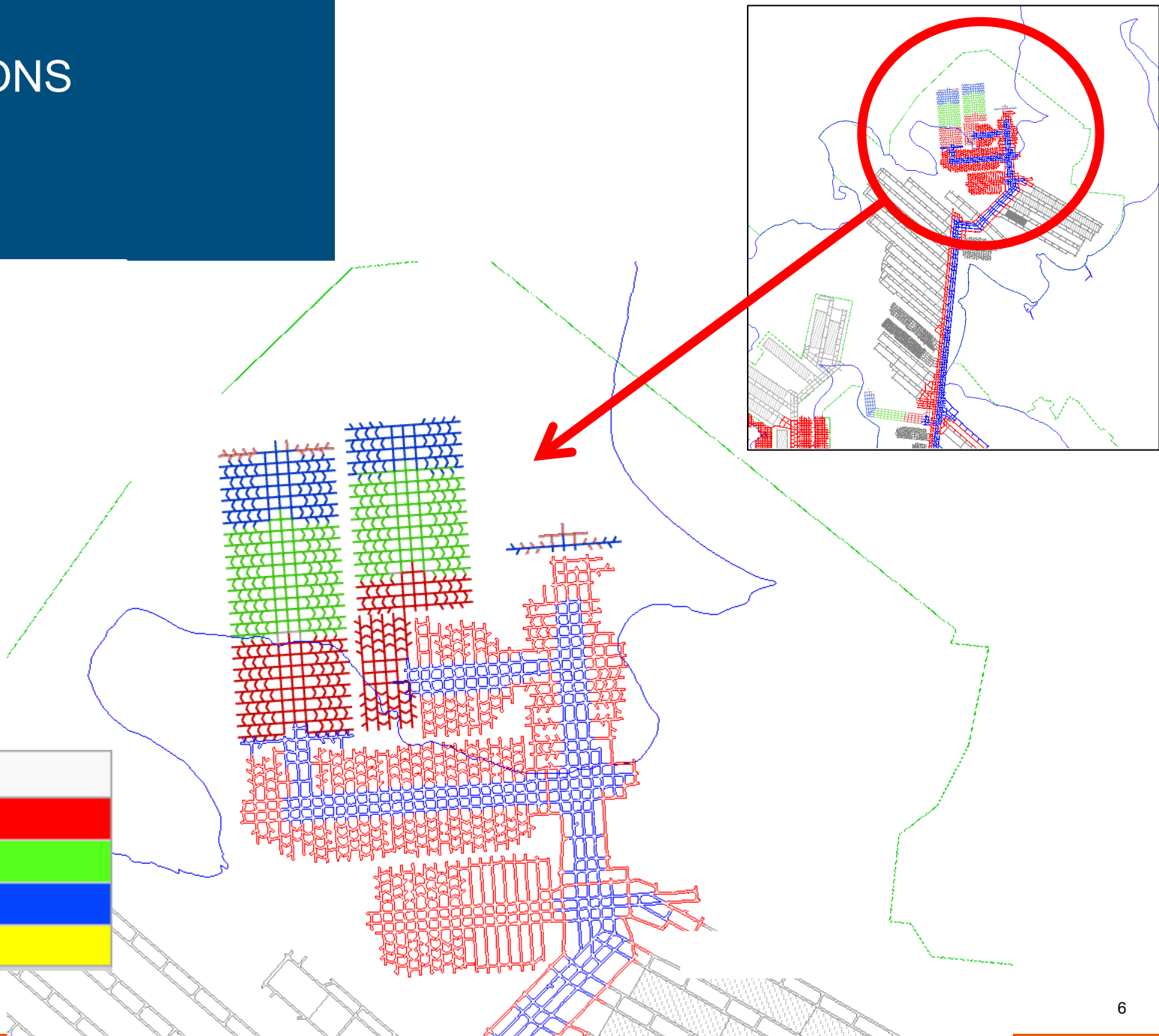
OPERATIONS

Production

- All production in Fassifern seam under Lake Macquarie and Morisset Peninsula.
- First-workings only (no secondary extraction).
- Mining has commenced driving mains for MA1 to facilitate future mining works in the western portion of Lake Macquarie.



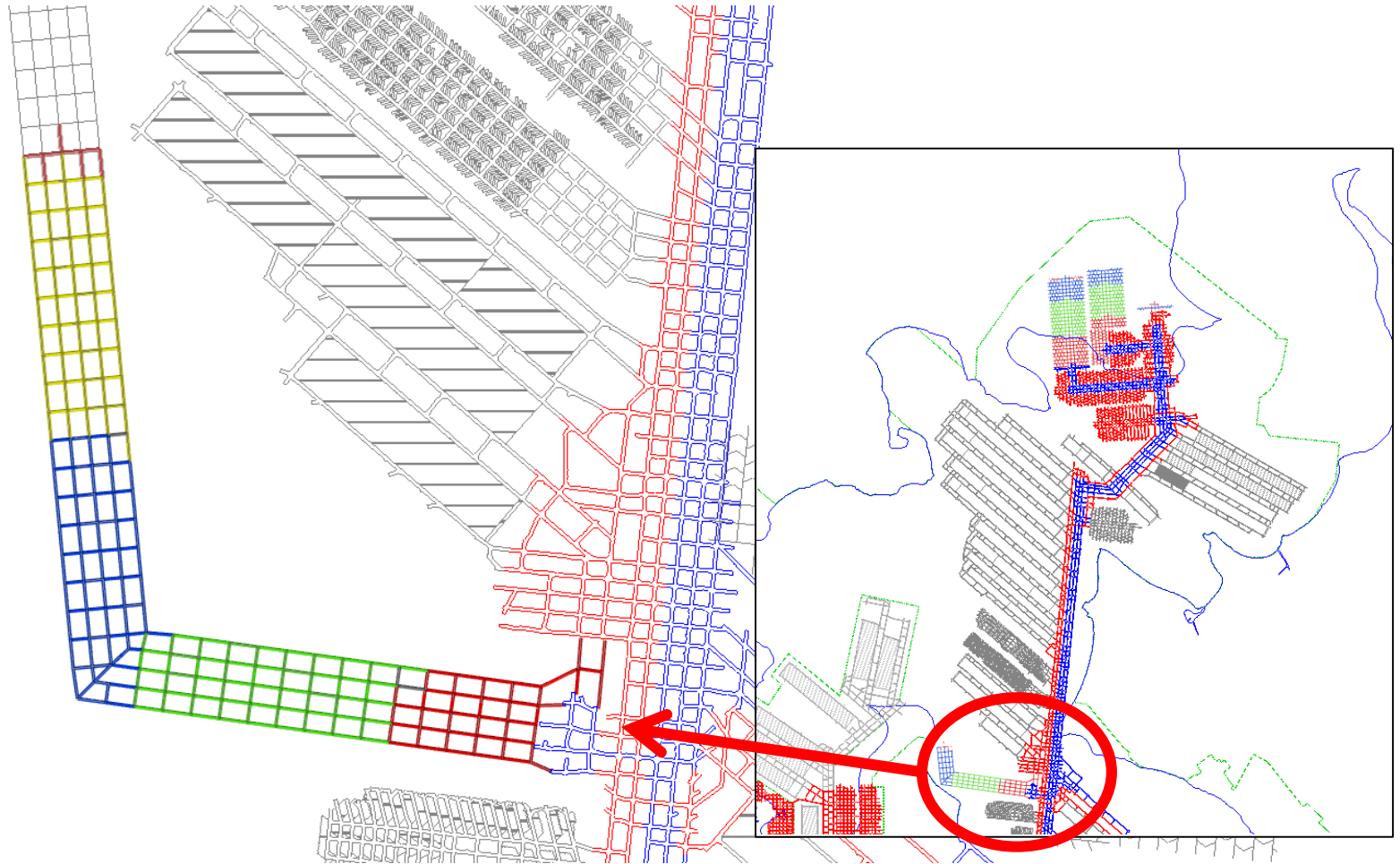
OPERATIONS



Description	Color
Q1	Red
Q2	Green
Q3	Blue
Q4	Yellow

OPERATIONS

Description	Color
Q1	Red
Q2	Green
Q3	Blue
Q4	Yellow



Current Approvals

Chain Valley Colliery

- EPL1770: Environmental Protection License - August 2022
- CVC and MC MOP 2020-2023 Amendment 2 – August 2021
- CVC SSD-5465 (MOD 4): Development Consent – August 2021
- Extraction Plan: MWS5 and NPA – March 2021

Mannering Colliery

- EPL 191 – Mannering Colliery – April 2021
- Mannering Colliery Project Approval PA 06_0311 (MOD 5) – June 2020

APPROVALS

Consent Consolidation Project

EIS and technical specialist reports have been finalised and submitted to the Department of Planning and Environment (DPE).

DPE have reviewed for adequacy with the EIS to be on public exhibition between 18 November to 16 December 2022

Delta Coal is required to notify landowners following the acceptance of the EIS by the DPE. This will be done through a newspaper advertisement in the Newcastle Herald.

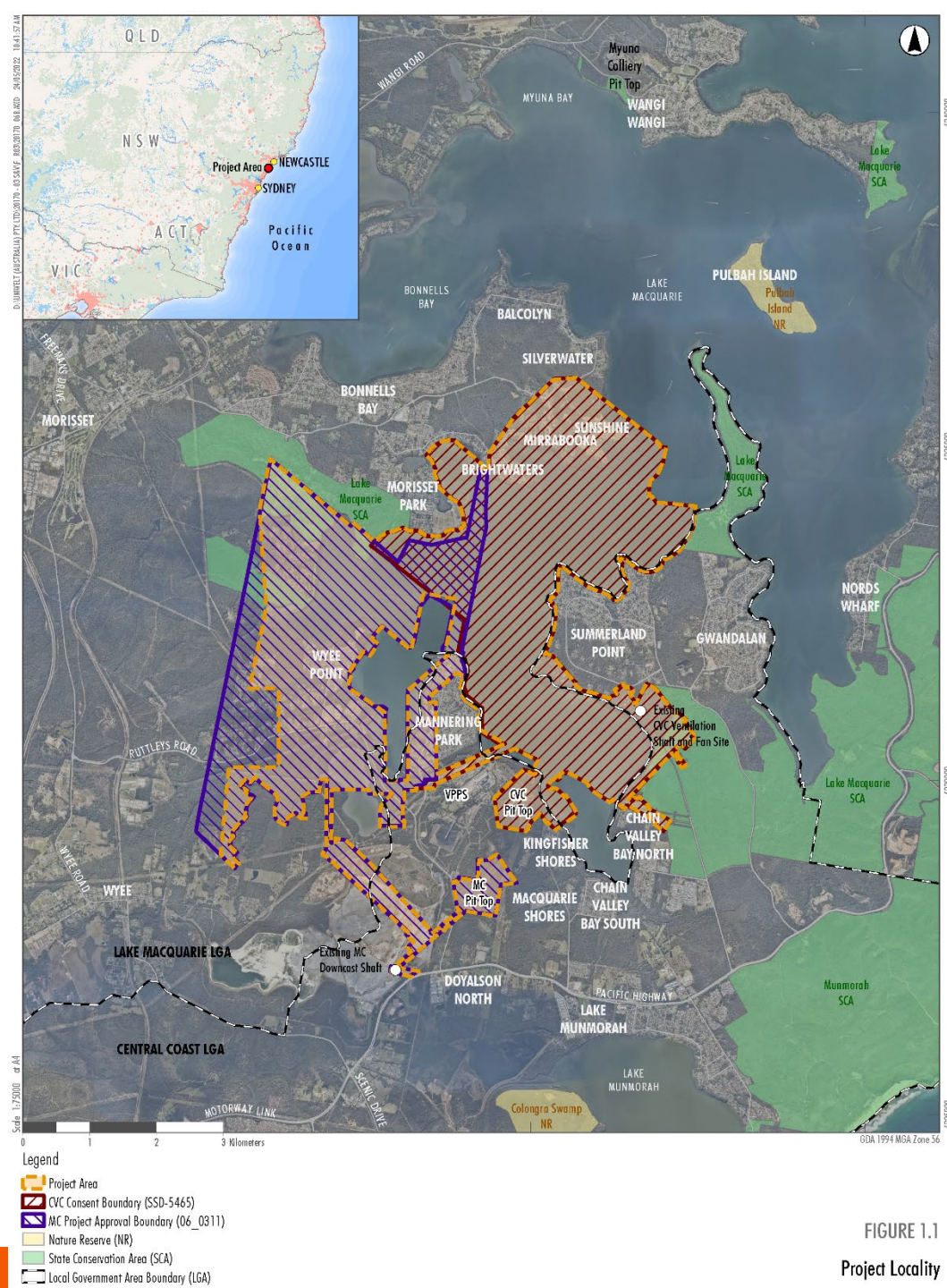


FIGURE 1.1
Project Locality

LANDOWNER NOTIFICATION

- Delta Coal will be placing an advertisement in the Newcastle Herald on the 18th November (this Friday).
- The advert is to notify landowners that the EIS will be placed on exhibition by the DPE.

Landowner Notification

Great Southern Energy Pty Ltd (trading as Delta Coal) has submitted an Environmental Impact Statement to facilitate the Chain Valley Colliery Consent Consolidation Project, by which the Mannering Colliery and Chain Valley Colliery approvals granted under the Environmental Planning and Assessment Act 1979 will be consolidated. The project will extend the life of mining operations from 2027 to 2029, aligning with the current operational timeframe of Vales Point Power Station. The approval boundaries for the mines are not proposed to change beyond what is currently approved. The Department of Planning and Environment will be placing the Environmental Impact Statement on public exhibition, accessible via the Major Projects website (<https://pp.planningportal.nsw.gov.au/major-projects>).

Further details on the Consent Consolidation Project can be found on the Delta Coal website (www.deltacoal.com.au/community).

Alternatively you can contact Delta Coal via Email (info@deltacoal.com.au) or telephone (1800 687 260).

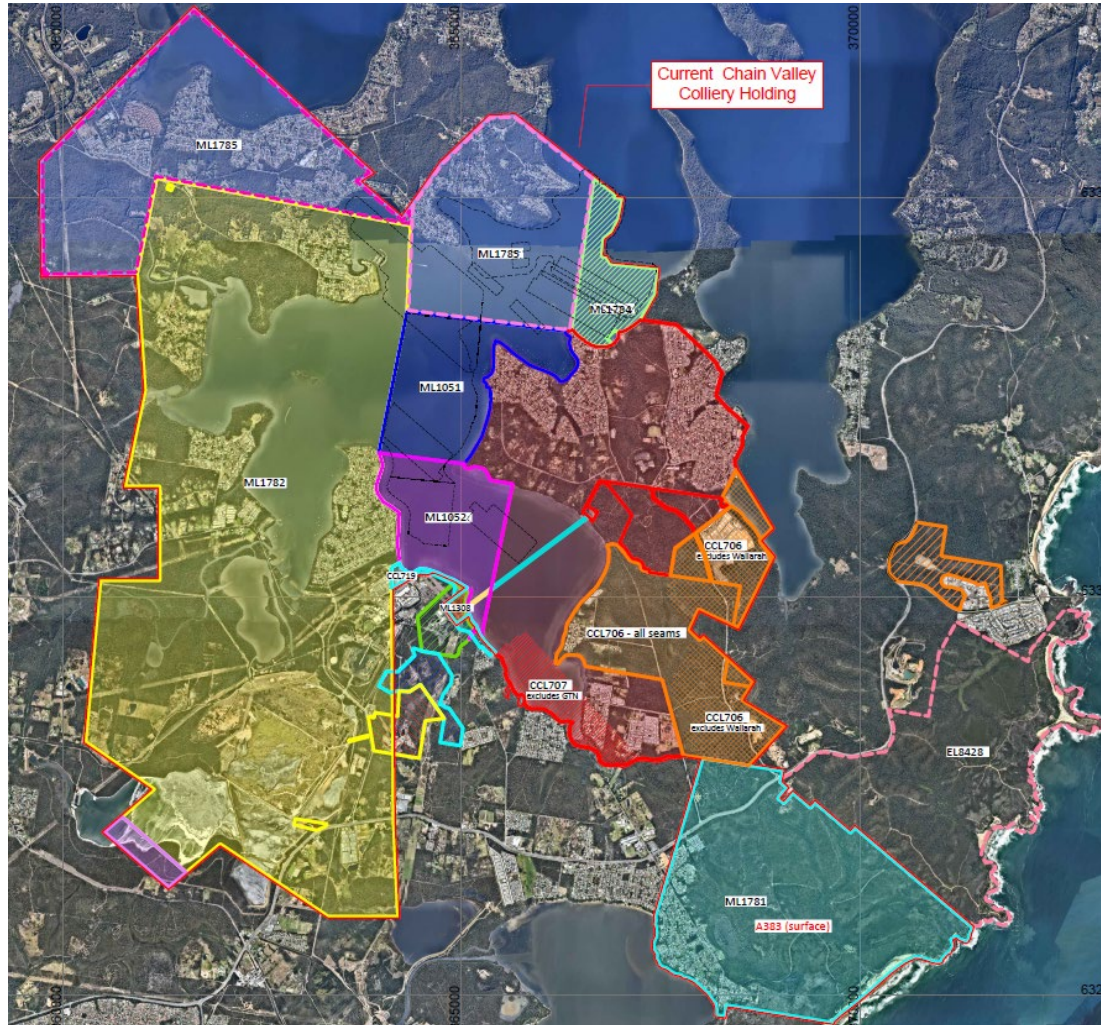
LEASE TRANSFERS COMPLETED



Mining Leases and Exploration Leases requiring transfer or partial transfer from Centennial have been completed.

Exploration licenses transferred since previous CCC (Aug-22) include:

- EL8853
- EL8854



Mine Holdings - Mining Leases / Consolidated Coal Leases

	CCL706 - all seams		excludes Wallarah
	CCL707 - all seams		excludes GTN
	ML1051		
	ML1052		
	ML1308		
	ML1781 (formerly part CCL719)		
	ML1782 (formerly part CCL721)		
	ML1783 (formerly part CCL722)		
	ML1784 (formerly ML1370)		
	ML1785 (formerly part ML1632)		

Exploration Licenses, Authorisations

	EL8853 (formerly part EL4444)
	EL8854 (formerly part EL6640)
	EL8428
	A383

Surface Leases

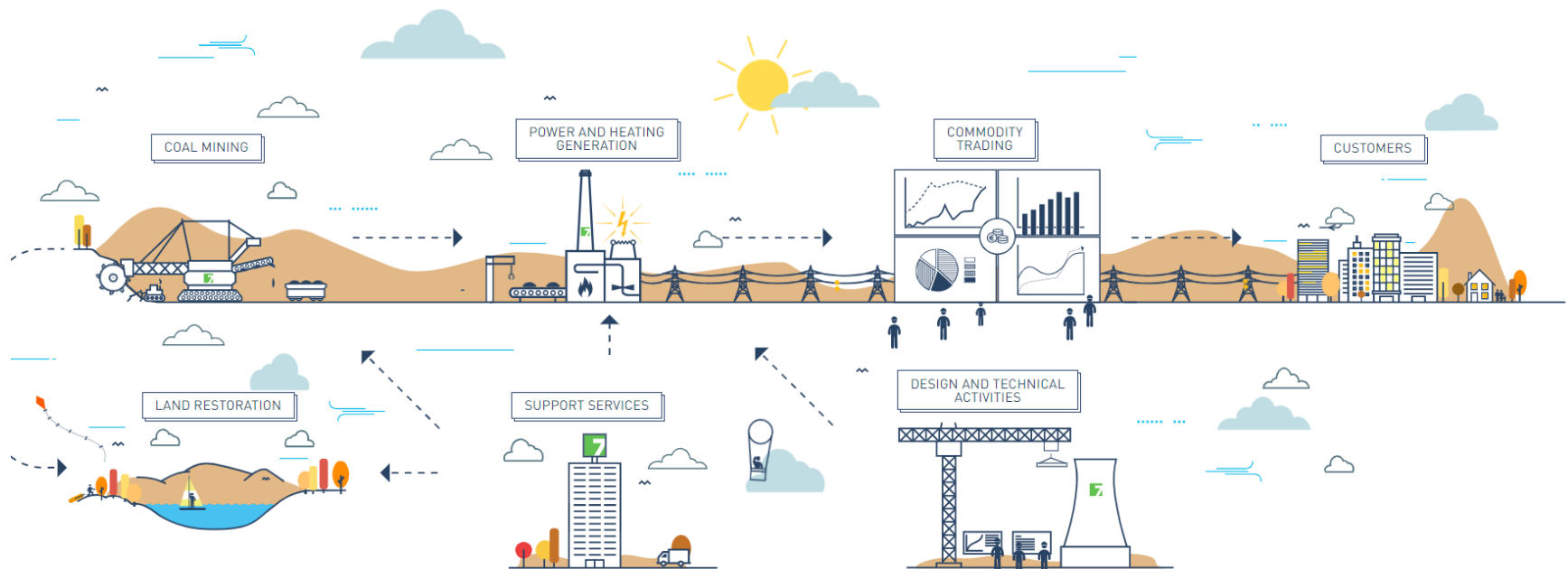
	MPL1349 - (Pit Top Surface Facilities)
	MPL1400 - (Submarine - CCL707)
	MPL1337 - (Submarine Cable - ML1052)
	MPL1389 - (Submarine Cable - Foreshore)
	CCL706 - (CHB Surface Area)
	ML1781 - Surface only
	ML1782 - Surface only

Consent

	Extraction Approval - Fassifern Seam
	Development Consent - Mod 4

Delta Coal is included within the sale of Delta Electricity to Sev.en Group.

The finalisation of the transaction is pending approval by the Foreign Investment board and Treasury NSW. The sale is anticipated to be completed in mid-December.



ENVIRONMENTAL INCIDENTS / NON- COMPLIANCES



Summary of Incidents and Non-compliances

Site	Date	Incident / Non-compliance Type
CVC	15 th September 2022	Exceedance of noise limits at receiver R22 (adjacent Chain Valley Colliery ventilation fan site).
CVC	8 th October 2022	Faecal Coliform and Total Suspended Solids Exceedance.
MC	12 th October 2022	Total Suspended Solids Exceedance.

ENVIRONMENTAL INCIDENTS / NON-COMPLIANCES

Exceedance of noise limits at R22

- Details:
 - Delta Coal undertook a noise mitigation assessment for the CVC ventilation fan and gained permission to access the property for Receiver 22.
 - An exceedance of noise limits was identified primarily due to a low-frequency noise penalty (+5dB added to result) with previous modelling indicating a +2dB penalty.
- Actions:
 - DPE, NSW EPA, Resources Regulator and resident at receiver R22 were notified.
 - Follow up monitoring confirmed the exceedance was not ongoing.
 - Delta Coal investigating cleaning and maintenance of silencers.



ENVIRONMENTAL INCIDENTS / NON-COMPLIANCES



Chain Valley Colliery – Point 27 TSS and Faecal Coliform Exceedance

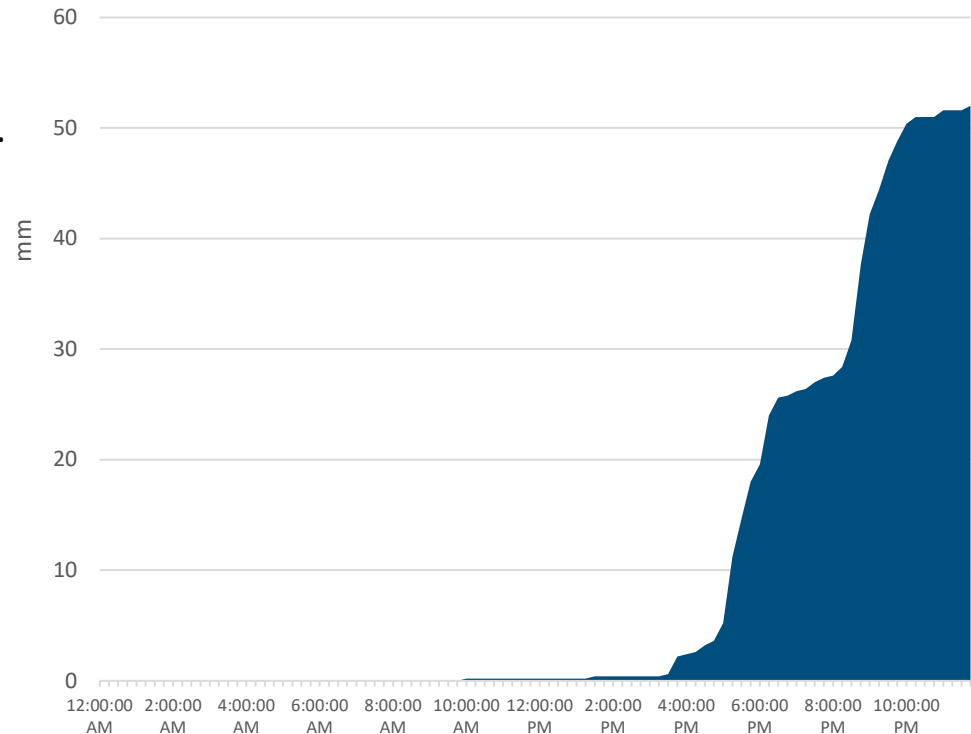
Details:

- Intensive rainfall resulting in overboarding of spillway and significant surface run-off entering sediment ponds.
- TSS = 56 mg/L
- Faecal Coliform = 420CFU/100ml

Actions:

- The incident was reported to the NSW DPE, NSW EPA and Resources Regulator.
- Complete sewer connection (delayed due to transfer of land between crown land and CC Council).
- Continue and implement review of surface water management TARP.
- Implementation of a desilting program in CVC Water Management Plan.

Rainfall 8 October 2022 at Mannering Colliery Meteorological Station



ENVIRONMENTAL INCIDENTS / NON-COMPLIANCES

Exceedance of Total Suspended Solids limit at Mannering Colliery Discharge (Point 1)

- Details:
 - Sediment laden water held in ponds, with discharge valve closed to retain water.
 - Low flow on the day of sampling, flow meters registered 0 kL daily discharge. MC meter can not identify less than 2L/sec of flow. Sampler noted ~2-3 mins to collect ~1.5L of sample.
 - TSS = 59 mg/L (12 October 2022).
- Actions:
 - Continue review MC site water balance and surface water management TARP.
 - Follow up sample collected 14 October 2022, result of 8 mg/L.
 - Continue investigate improvements in the Mannering Colliery flocculant system.



Benthic Communities Monitoring

- Benthic Communities monitoring was completed (Sept 22).
- Monitoring indicates compliance.
- Monitoring shows subsidence has not had effect on the quantity or species distribution of benthos.

Conditions from SSD-5465 – Mod 4	Compliance Status and Comments
Schedule 4 Environmental Conditions – underground mining Performance Measures – Natural Environment Biodiversity – Benthic Communities Subsidence Impact Performance Measure – Minor environmental consequences, including minor changes composition and/or distribution.	Compliant – See section 16 - Conclusions
Measurements undertaken by generally accepted methods. Measures Methods fully described.	Compliant – See section 4 and 5 Compliant – See section 4 and 5

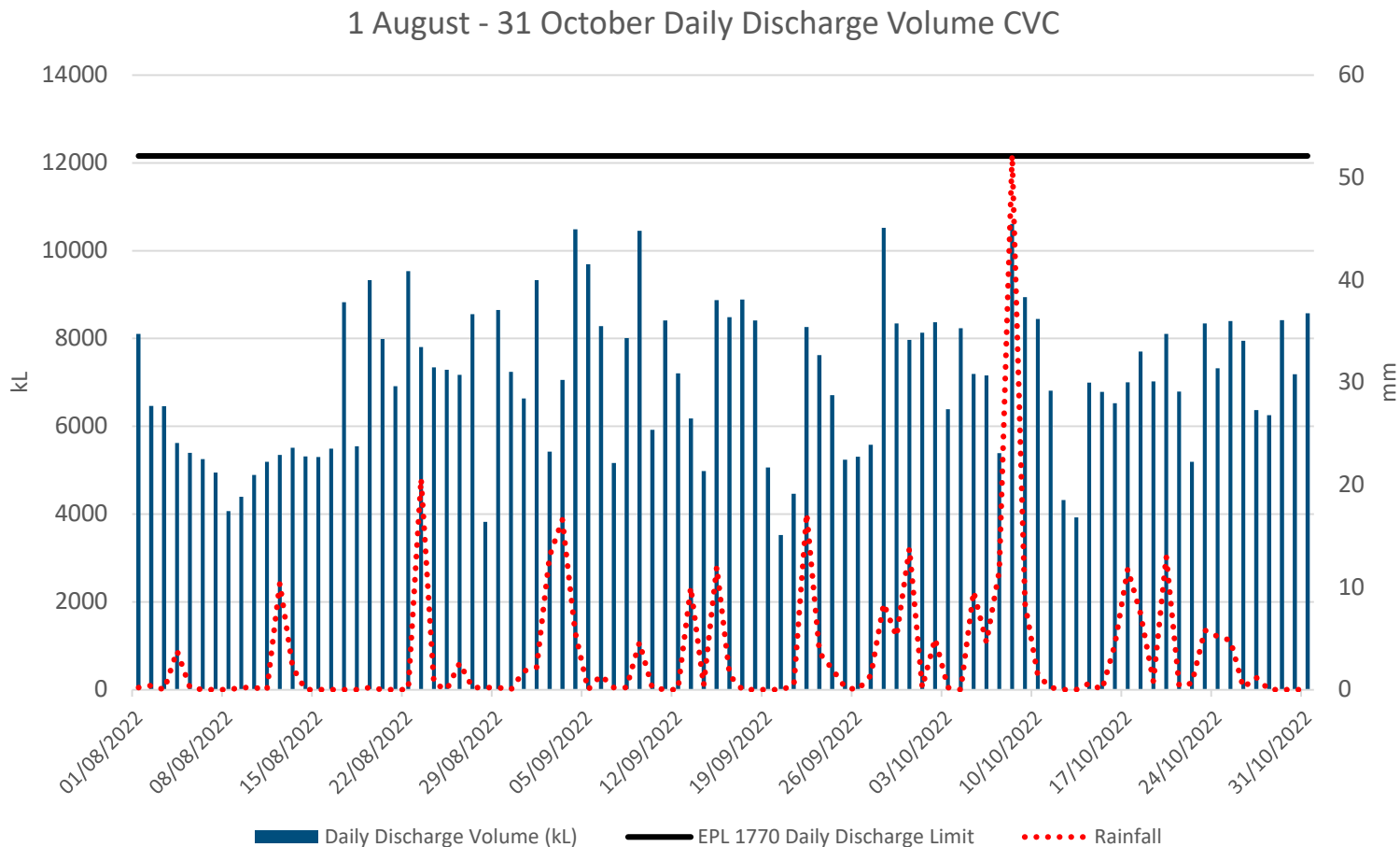


Polychaete worms



Soletellina alba

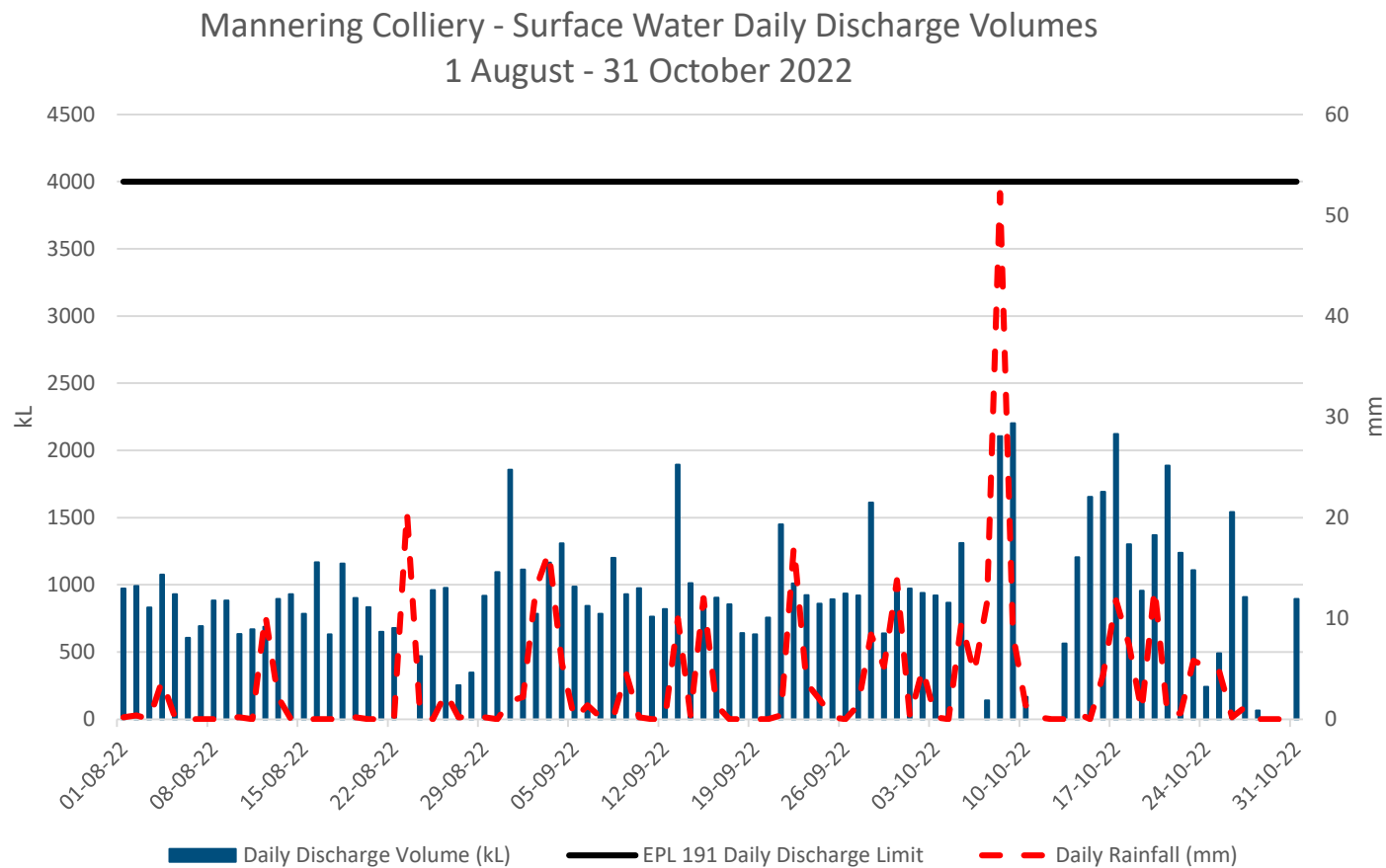
CVC Surface Water Daily Discharge and Rainfall Volumes



CVC Surface Water Quality Monitoring

LDP1	Limits	Aug-2022	Sep-2022	Oct- 2022
Faecal Coliforms (CFU/100ml)	200	27	~5	42
Total Suspended Solids (mg/kg)	50	6	<5	<5
pH (pH Units)	6.5-8.5	7.73	7.66	7.57
Oil and Grease	10	<5	<5	<5

MC Surface Water Daily Discharge Volume and Rainfall Volumes



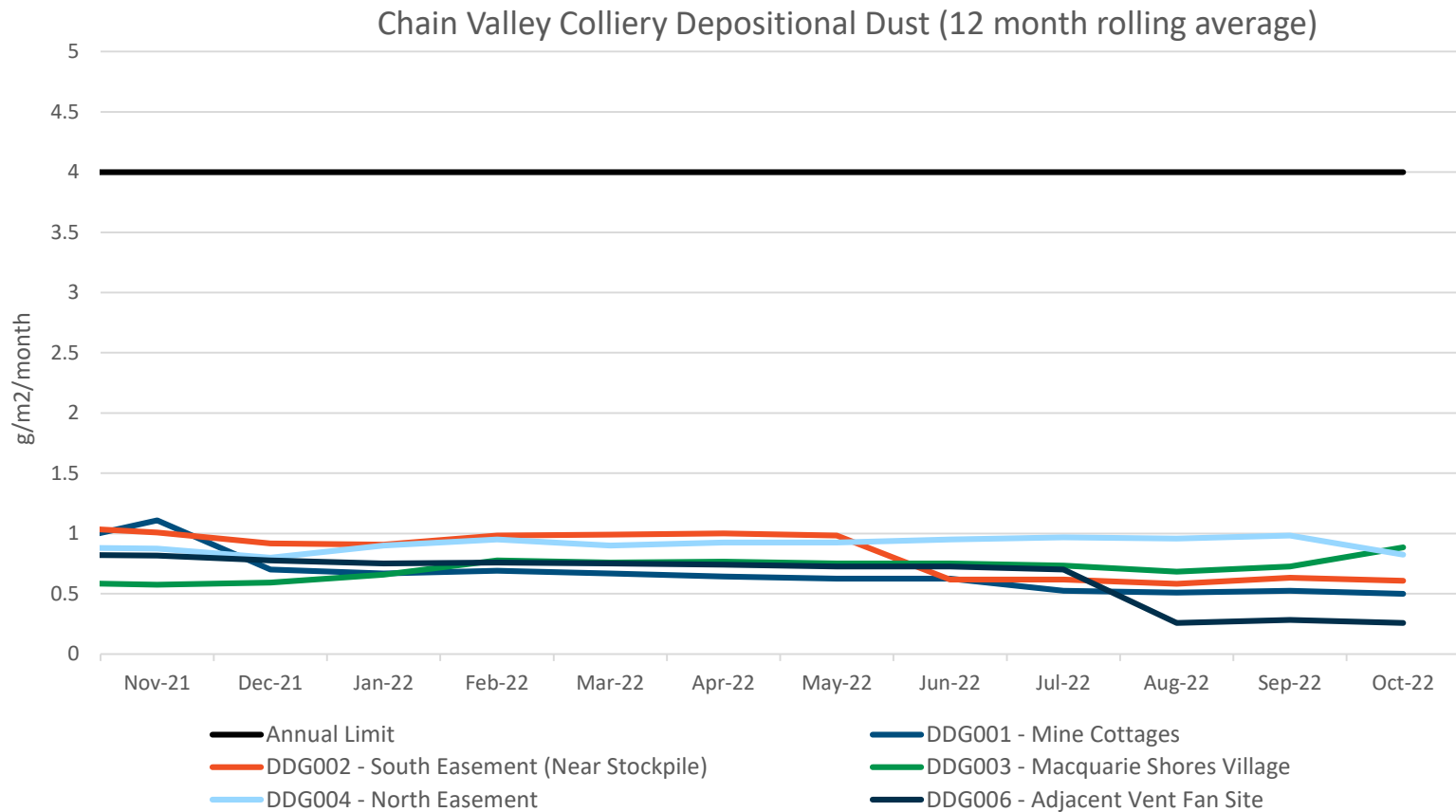
ENVIRONMENTAL PERFORMANCE



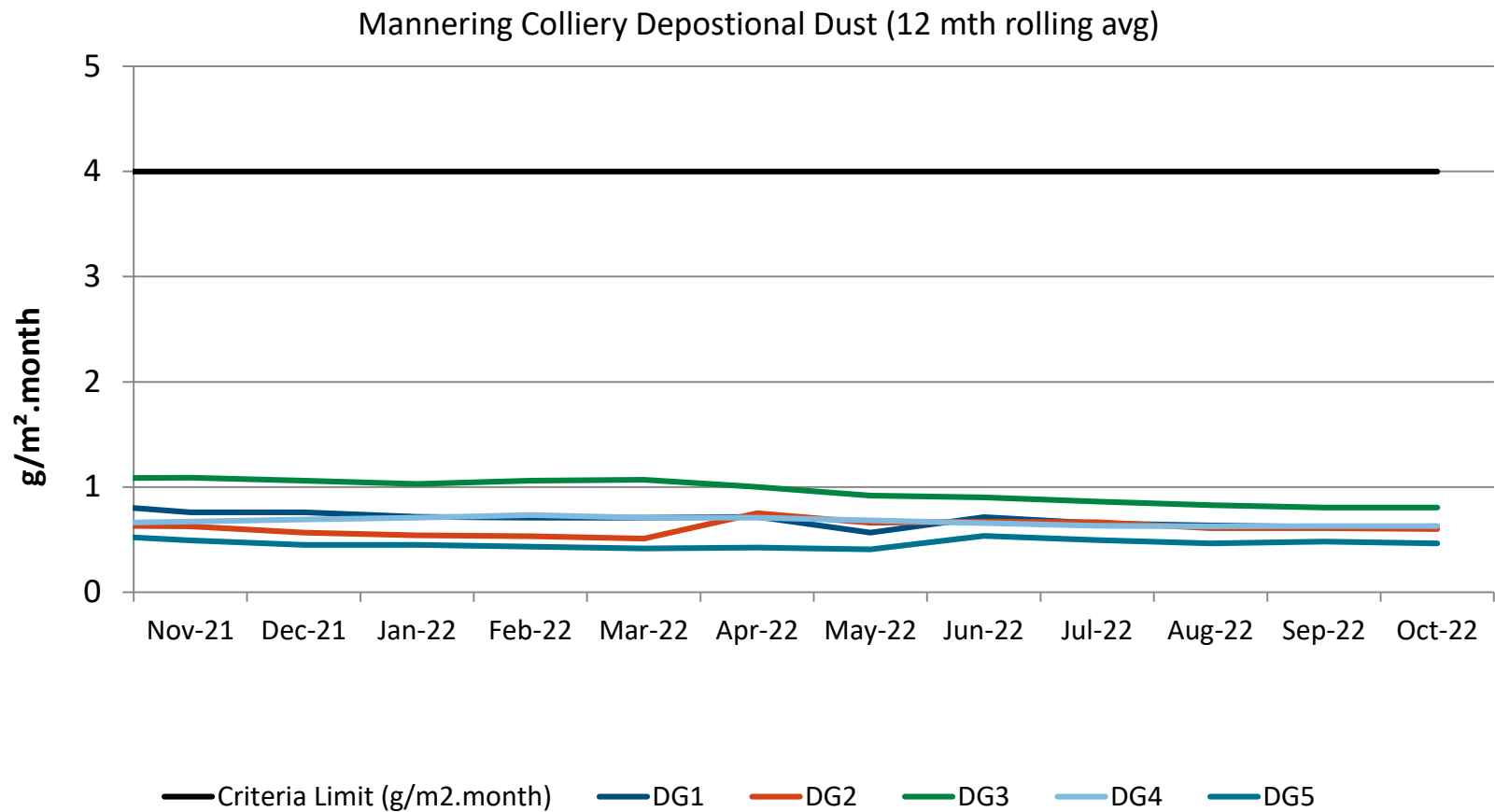
MC Surface Water Quality Monitoring

LDP1	Limits	Aug-2022 Average	Sep-2022 Average	Oct- 2022 Average
Oil & Grease mg/L	10	<5	<5	<5
TSS mg/L	50	17.5	9.3	18.8
pH	6.5-8.5	7.97	7.89	7.73

CVC Depositional Dust Monitoring

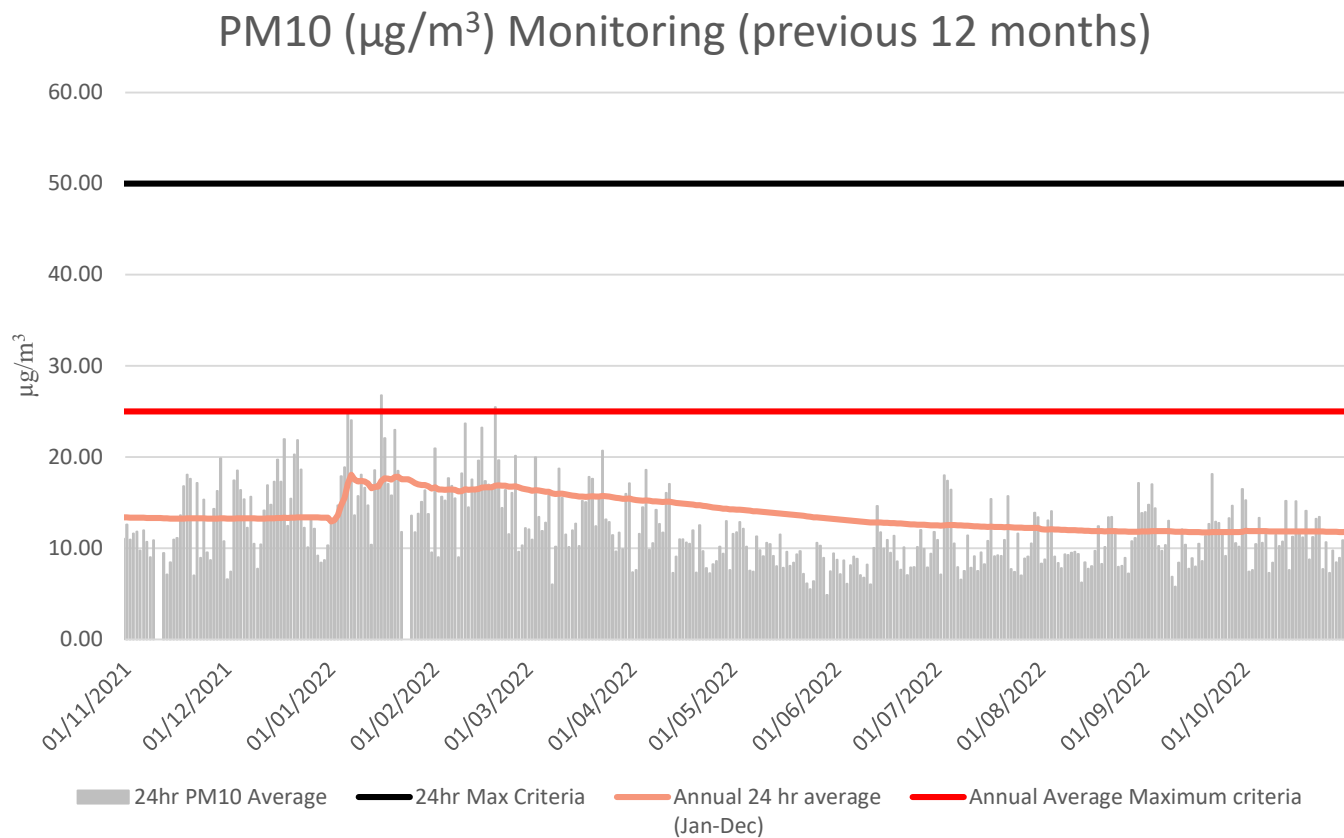


MC Depositional Dust Monitoring



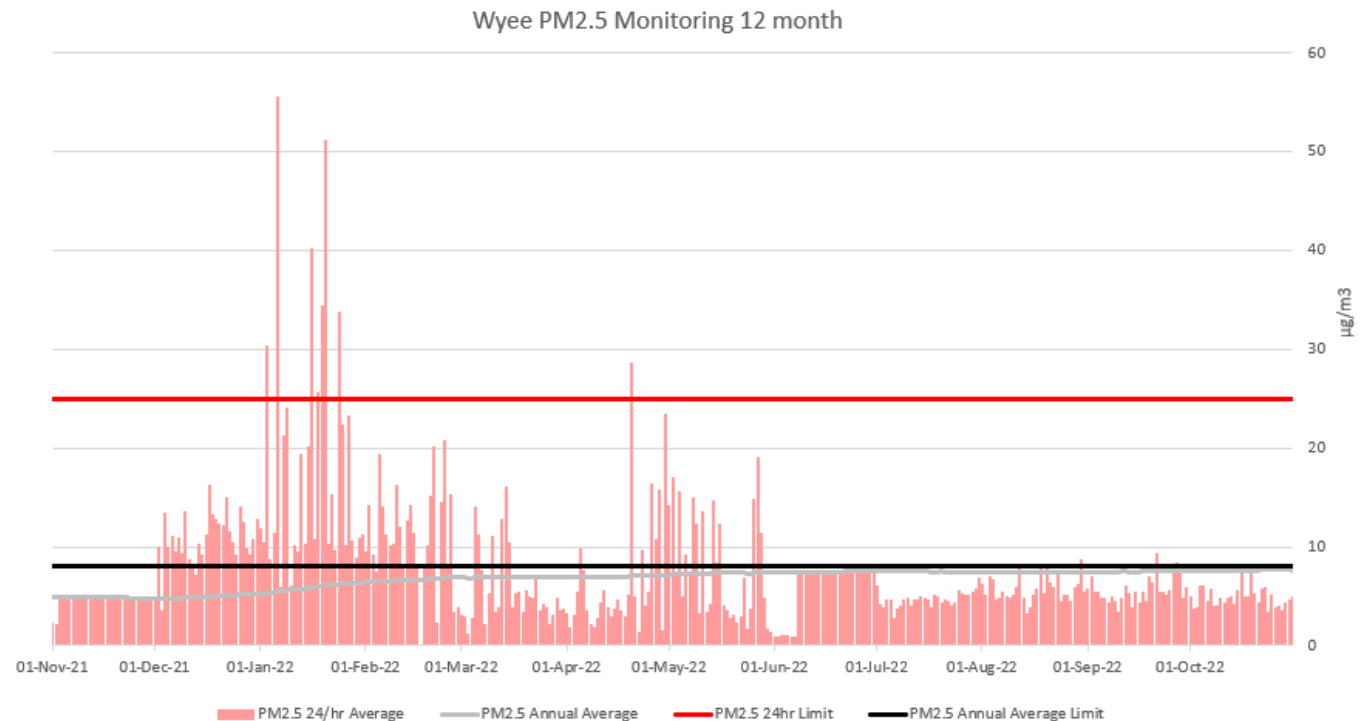
PM₁₀ Monitoring

No exceedances of the average annual or 24hr criteria have been observed within the last 12 months.



PM_{2.5} Monitoring

There were no exceedances of the PM_{2.5} daily average limit in October 2022. The 12-month rolling average PM_{2.5} value on 31 October 2022 was 7.64 µg/m³.

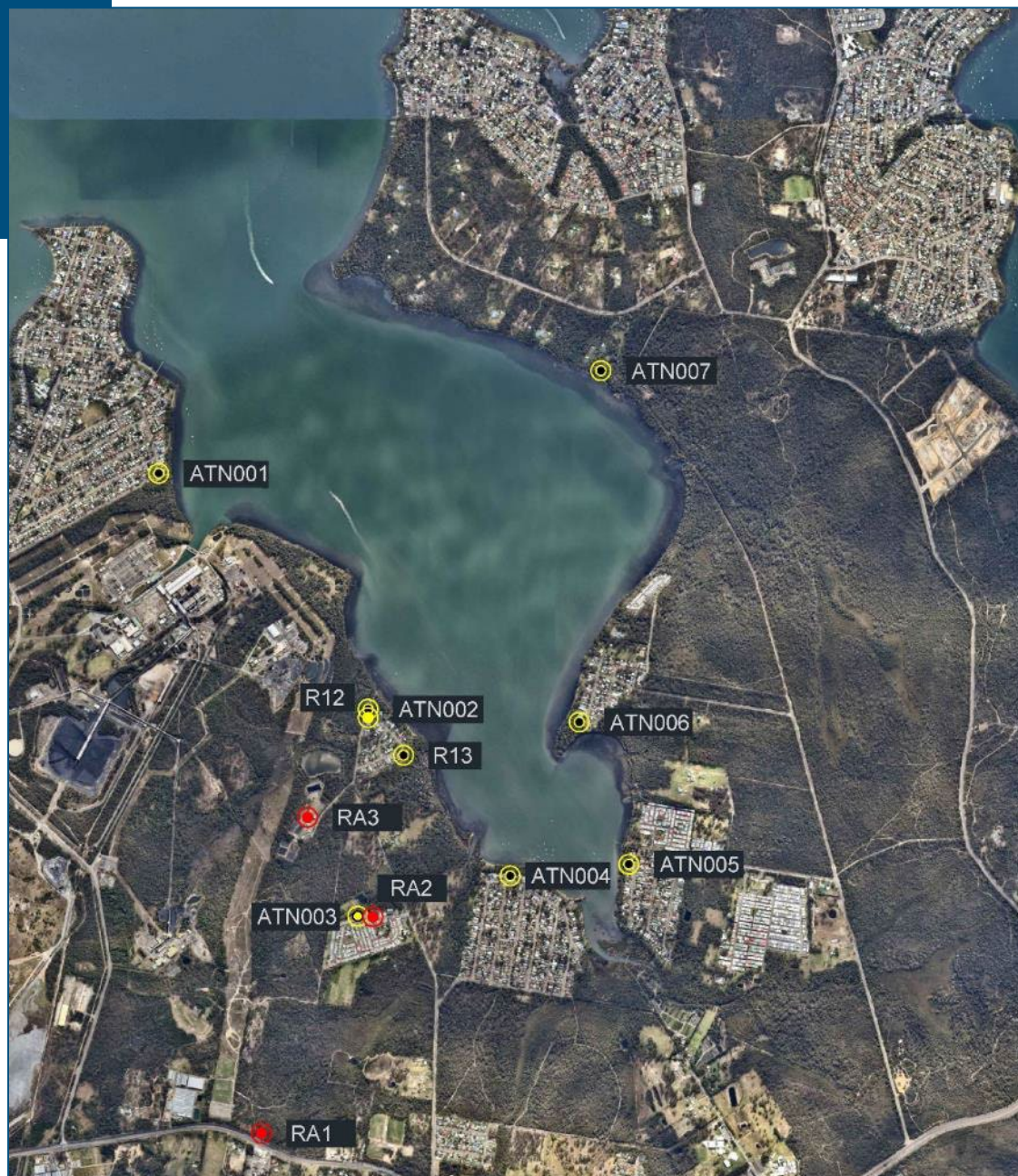


ENVIRONMENTAL PERFORMANCE

Noise Monitoring

Red = MC
Monitoring
Location

Yellow = CVC
Monitoring
Location



Noise Monitoring – MC August - October 2022

There were no noise exceedances at MC for the reporting period.

IA = Inaudible

Location	Date	Site Contributions, dB		Noise Limits, dB		Compliance status
		LAEQ	LAMAX	LAEQ	LAMAX	
August 2022						
RA1	15/08/2022	IA	IA	36	46	☑
RA2		<35	≤35	40	45	☑
RA3		IA	IA	39	49	☑
September 2022						
RA1	07/09/2022	IA	IA	36	46	☑
RA2		IA	IA	40	45	☑
RA3		IA	IA	39	49	☑
October 2022						
RA1	18/10/2022	IA	IA	36	46	☑
RA2		IA	IA	40	45	☑
RA3		IA	IA	39	49	☑

Noise Monitoring – CVC Q3 2022

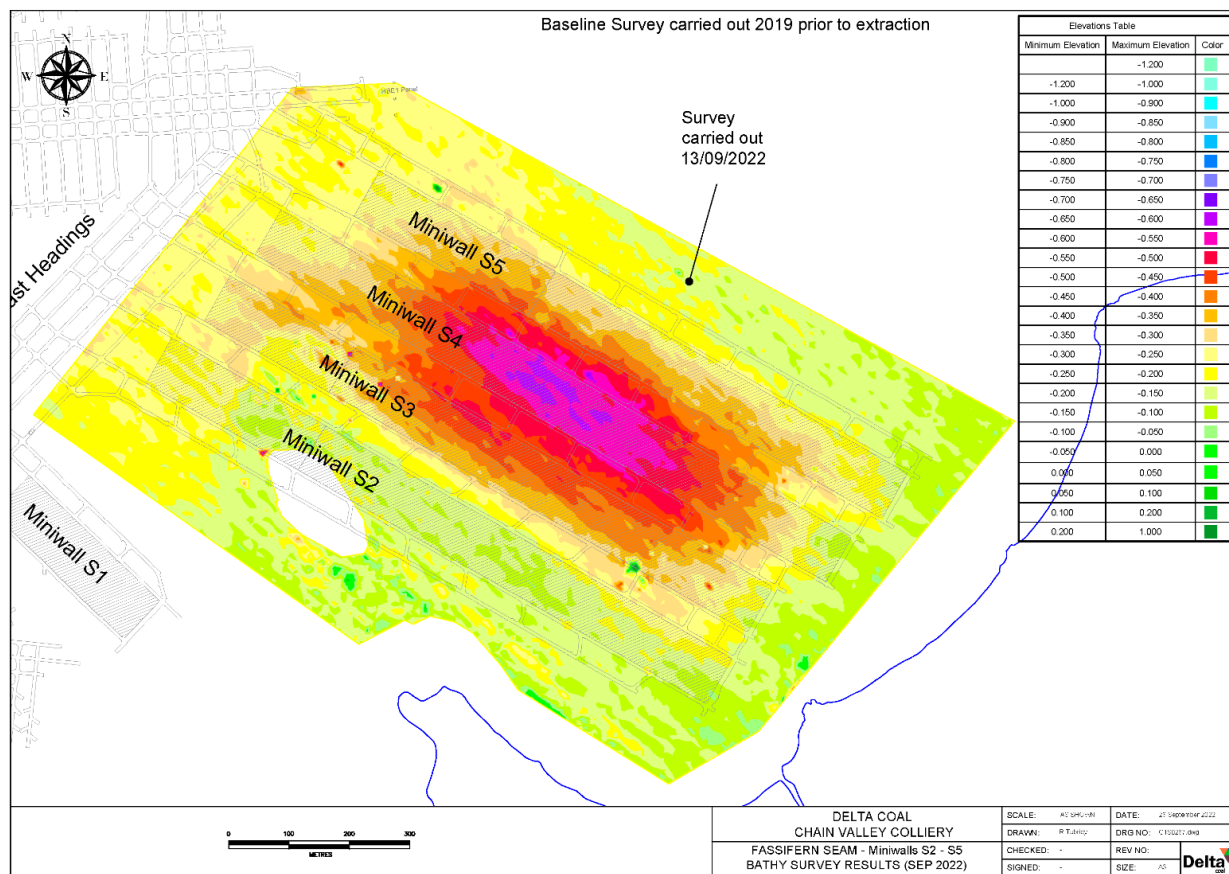
Chain Valley Colliery Q3 noise monitoring was undertaken on the 7th, 9th and 15th of September.

Note: an exceedance was identified at R22 as previously discussed during noise mitigation study.

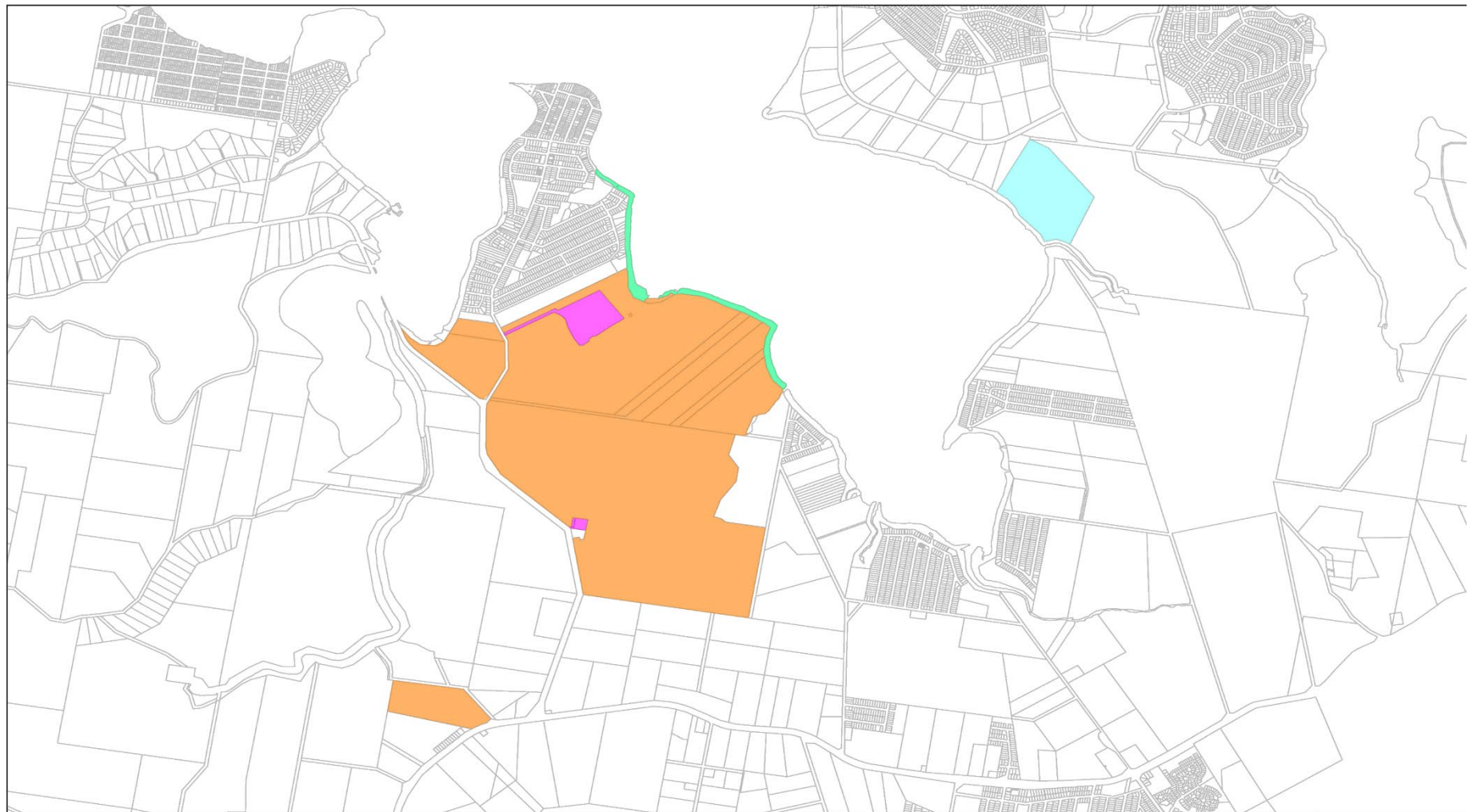
Monitoring Point	Site Contributions, dB		Noise Limit		Compliance Status
	LA _{EQ} (15 min)	LAMAX	LA _{EQ} (15 min)	LAMAX	
Chain Valley Colliery Q1 2022 (14, 15 and 18 March 2022)					
ATN001	In-audible (IA)	IA	38	45	☑
ATN002	<38	IA	49	54	☑
ATN003	IA	IA	36	45	☑
ATN004	IA	IA	35	45	☑
ATN005	IA	IA	35	45	☑
ATN006	IA	IA	37	45	☑
ATN007	43 (38+5 LFN)	42	46	46	☑
R12	IA	IA	49	53	☑
R13	IA	IA	43	49	☑

Subsidence Monitoring

- Bathymetric survey of previous secondary workings was completed (Sept 22).
- Subsidence compliant, below approval limit (780mm) in Zone B.
- Maximum subsidence (600-650mm) was higher than the Geotech Engineer's predicted maximum (500mm). A review of subsidence prediction is ongoing.
- Survey Accuracy $\pm 100\text{mm}$
- Subsidence monitoring of the Morisset Peninsula has confirmed nil impact from sub-surface first workings.



DELTA COAL LAND OWNERSHIP



Land Ownership Key

- Delta Electricity
- Delta Coal
- Transgrid
- State of NSW

DELTA COAL
CHAIN VALLEY COLLIERY
Figure 1.3.1.2 - Land Ownership

SCALE:	NTS	DATE:	1 August 2022
DRAWN:	L McWha	DRG NO:	Figure 1.3.1.2
CHECKED:	R Tubridy	REV NO:	1
SIGNED:	-	SIZE:	A3



ENVIRONMENTAL PERFORMANCE

Seagrass Monitoring Locations

Delta Coal undertook a Seagrass Survey in June 2022 as an annual requirement.

Comparison of seagrass results were requested by the CCC in the Q3 meeting.



ENVIRONMENTAL PERFORMANCE

Seagrass Transect Length

The length of the transects is provided in the adjacent tables.

Chain Valley Bay

Transect Number	Length (m)	Transect Number	Length (m)
Transect E1	26	Transect E2	44
Transect E3	75	Transect E4	59
Transect E5	67	Transect E6	57
Transect E7	52	Transect E8	35
Transect E9	152	Transect E10	71
Transect E11	73	Transect E12	46
Transect E13	89	Transect E14	98
Transect E15	82	Transect E16	44
Transect T1	47	Transect T2	14
Transect T3	16	Transect T4	25
Transect T5	49	Transect T6	63
Transect T7	52	Transect T8	42
Transect L1	20		

Summerland Point

Transect Number	Length (m)	Transect Number	Length (m)
Transect C5	41	Transect C6	13
Transect F1	47	Transect F2	130
Transect F3	65	Transect F4	65
Transect F5	70	Transect F6	74
Transect F7	30		

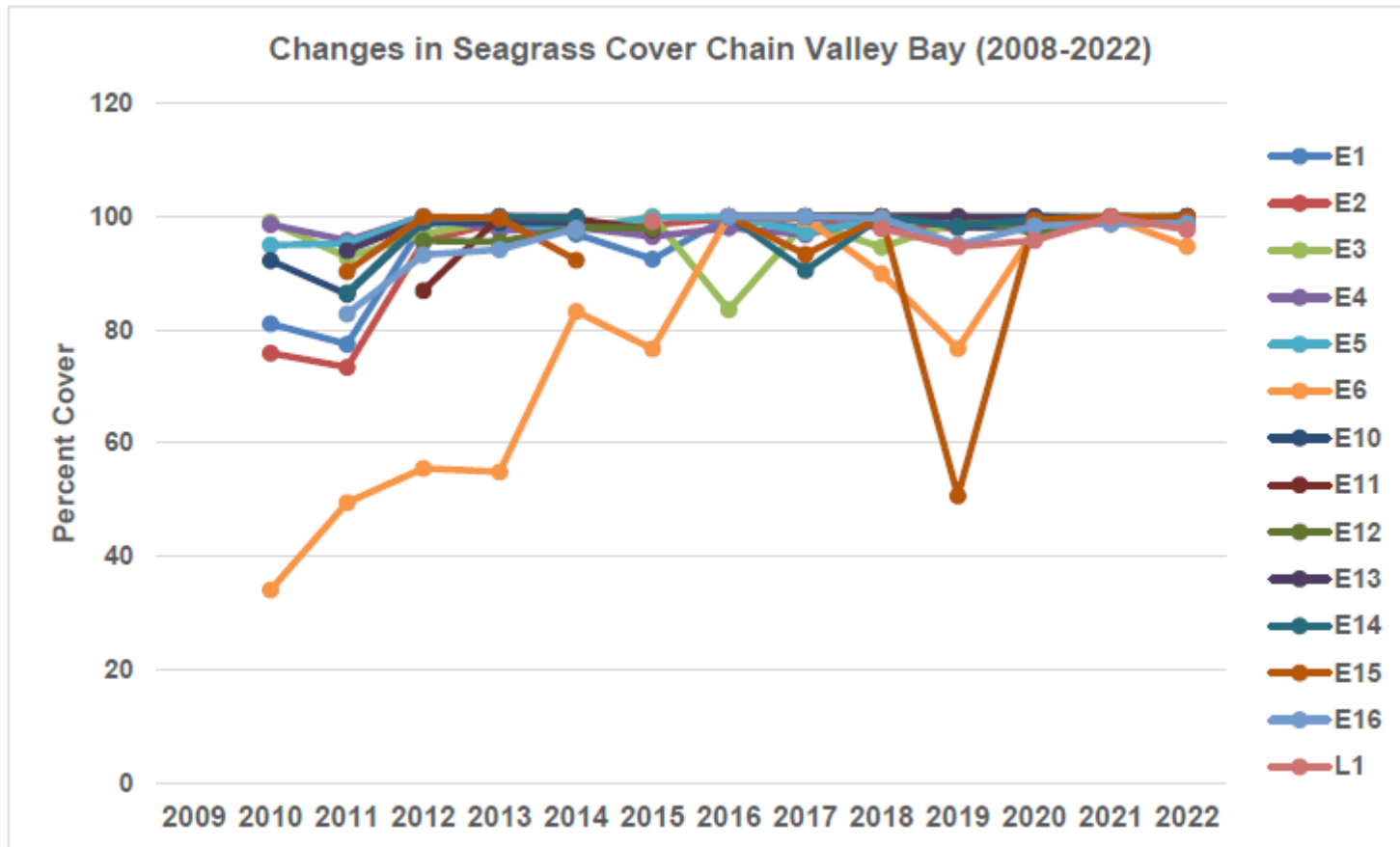
Bardens Bay

Transect Number	Length (m)	Transect Number	Length (m)
Transect A1	42	Transect A2	24
Transect A3	34	Transect A4	26
Transect A5	18	Transect A6	13

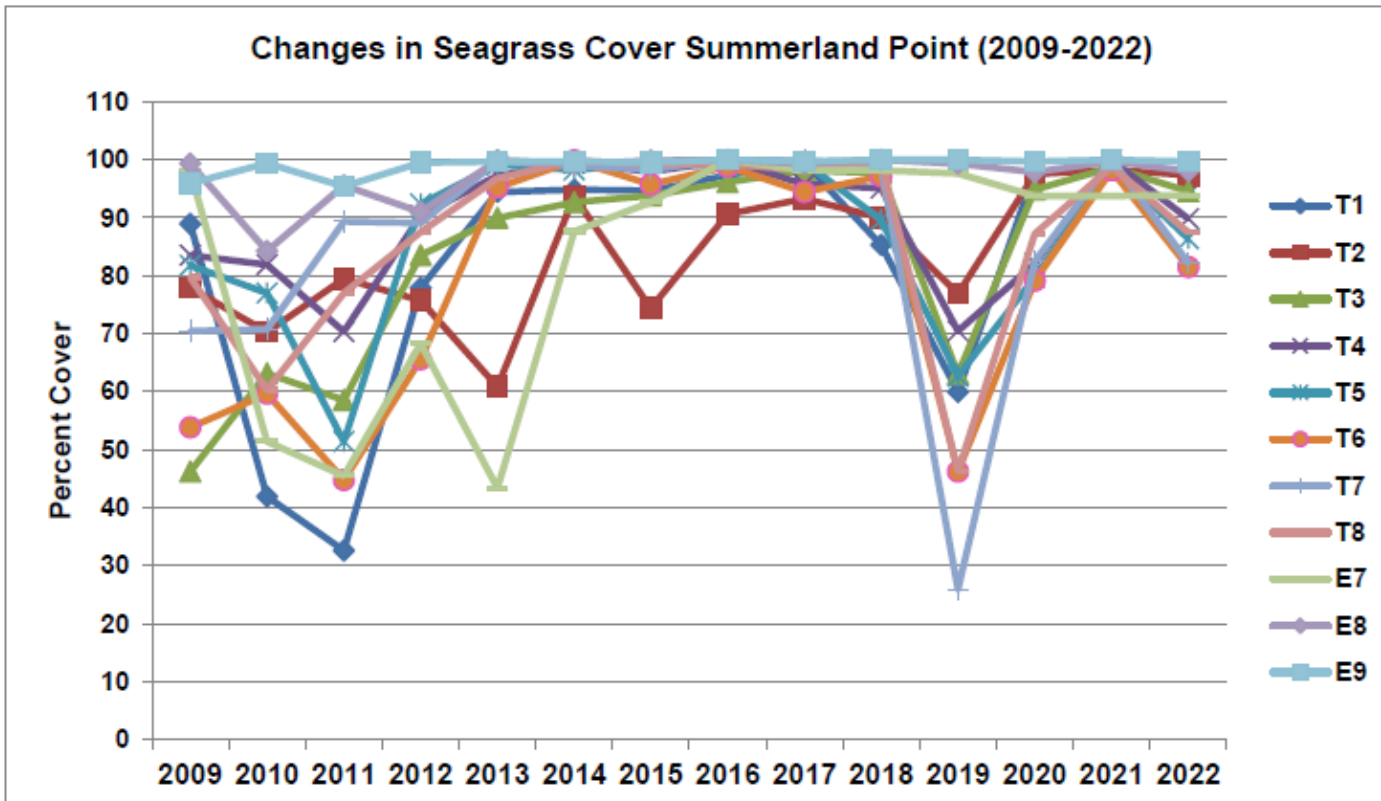
Brightwaters

Transect Number	Length (m)	Transect Number	Length (m)
Transect S1	69	Transect S2	31
Transect S3	79	Transect S4	105
Transect S5	16	Transect S6	27

Changes in Seagrass Cover

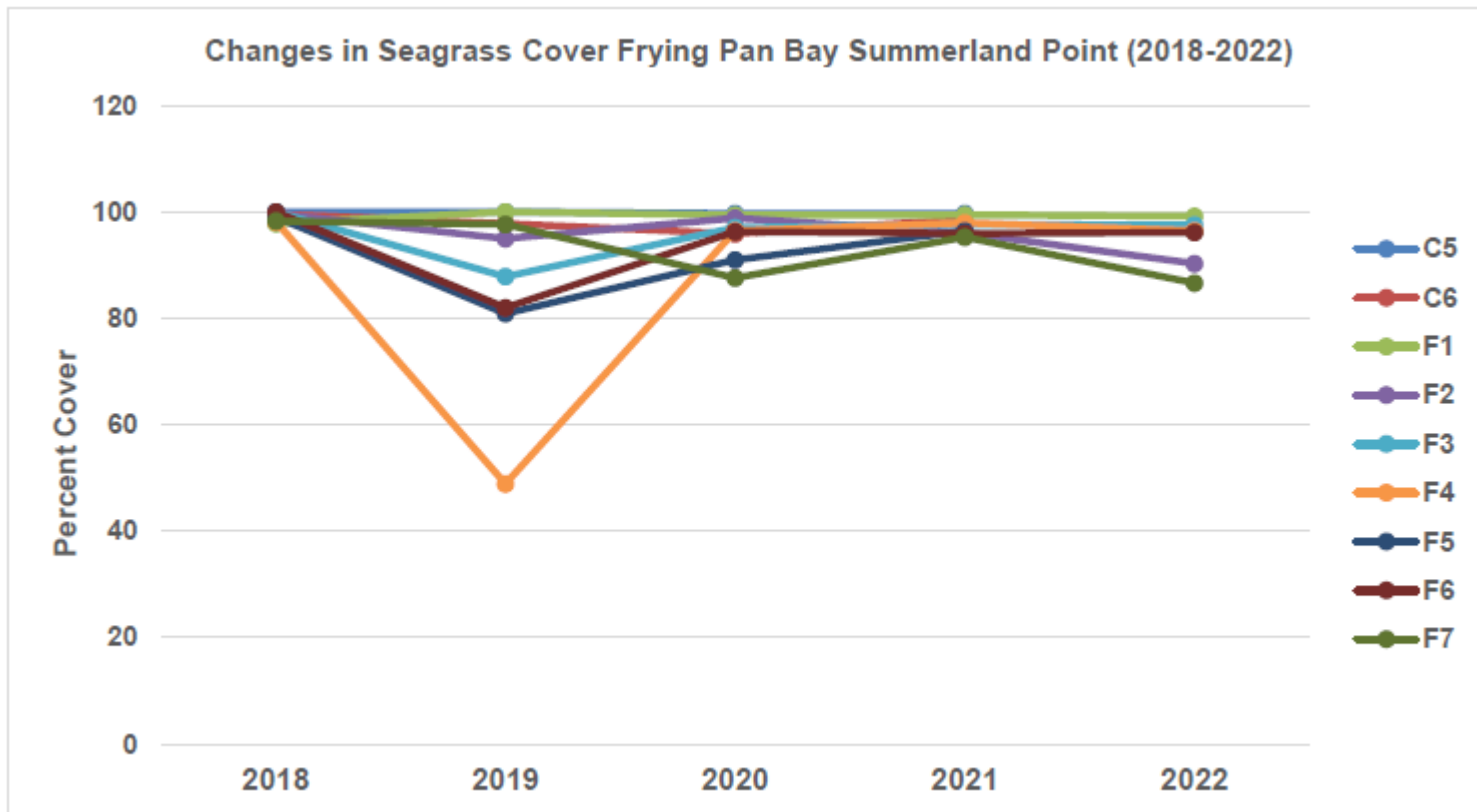


ENVIRONMENTAL PERFORMANCE

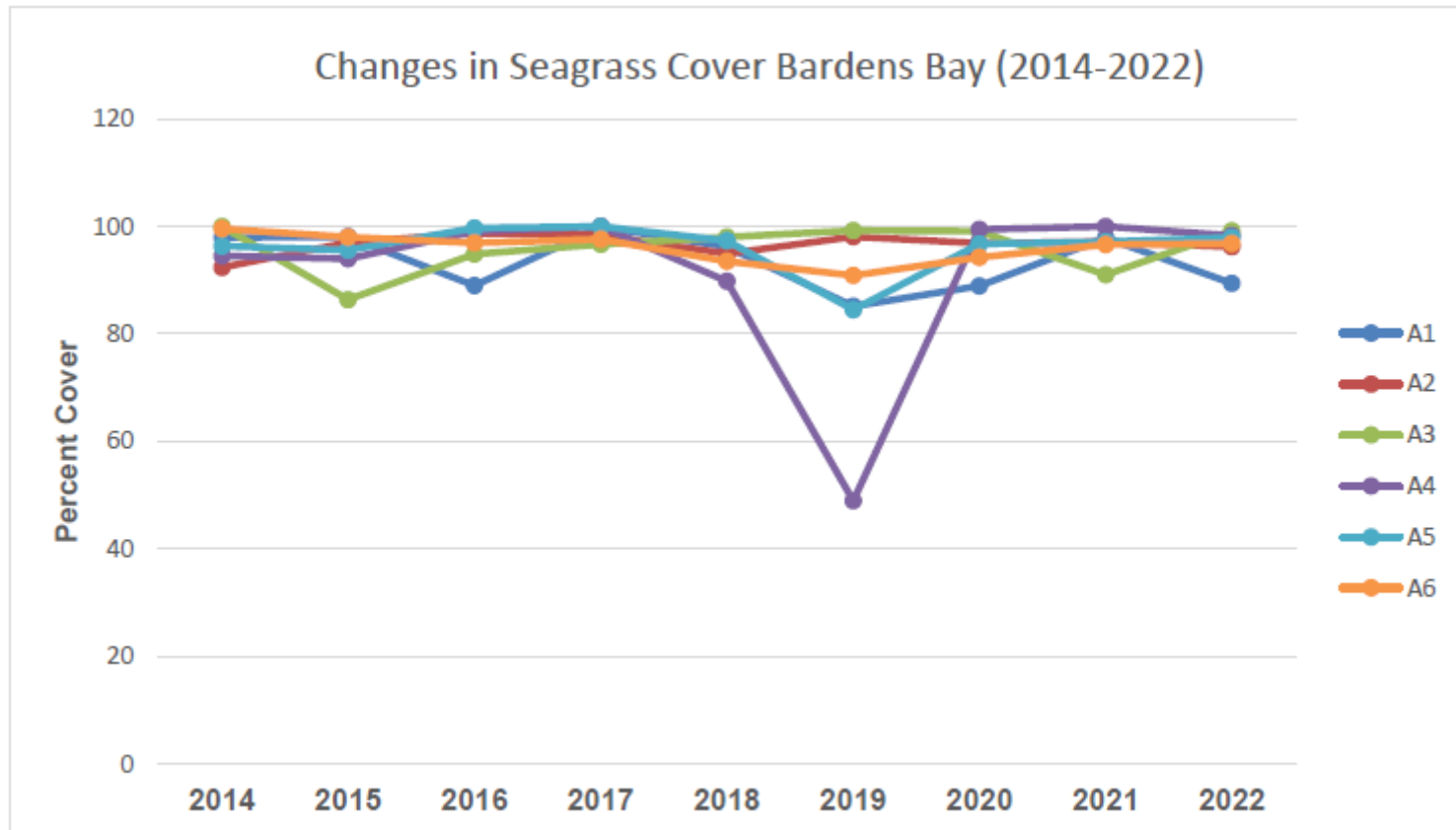


Note: the drop in percentage cover in 2019, particularly at Summerland Point was attributed to low rainfall, high atmospheric pressure and a drop in water level of about 0.3m. The lowered lake level caused increased water temperature over seagrass beds as well as damaging waves, and likelihood of damage by boats.

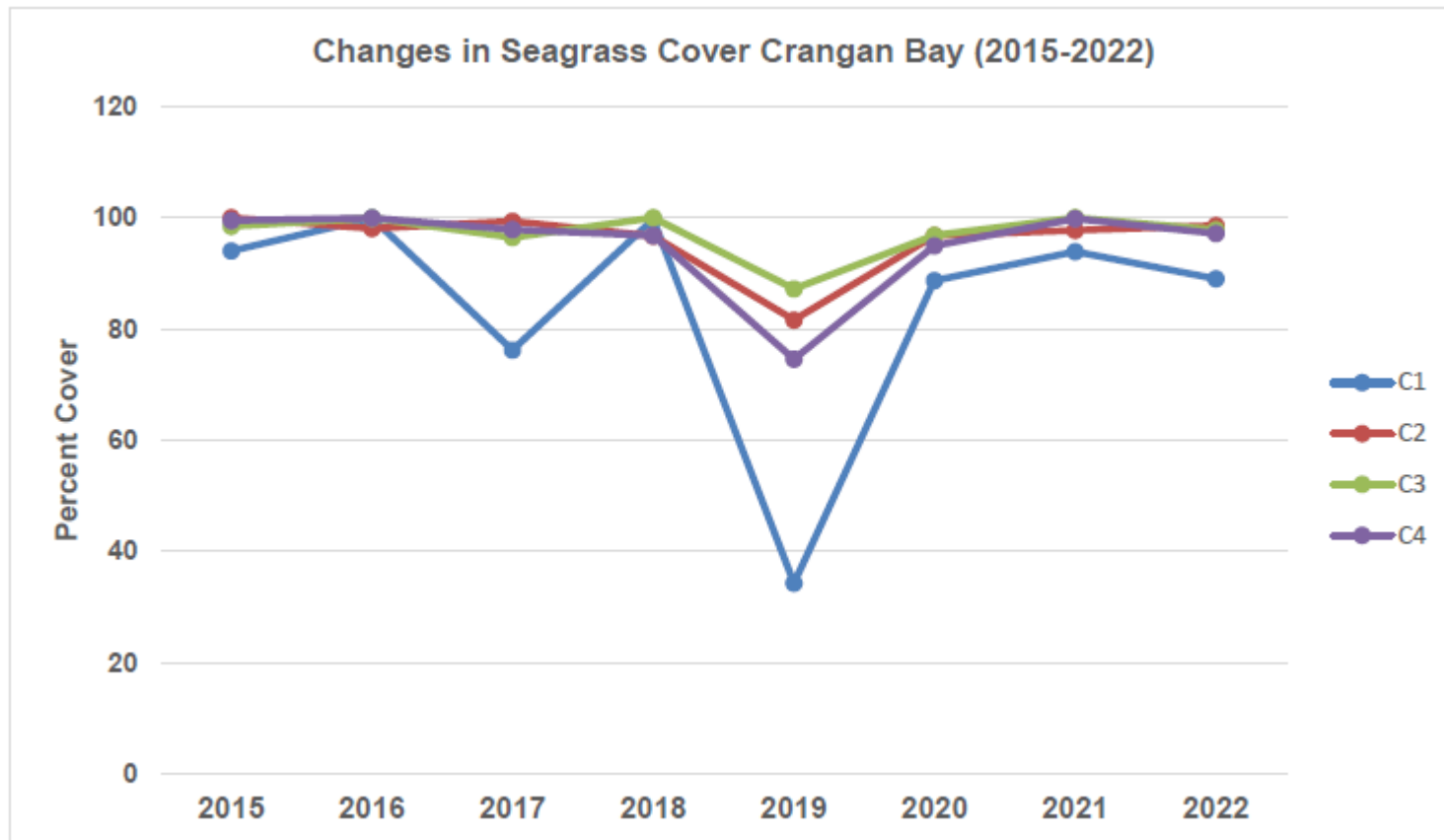
ENVIRONMENTAL PERFORMANCE



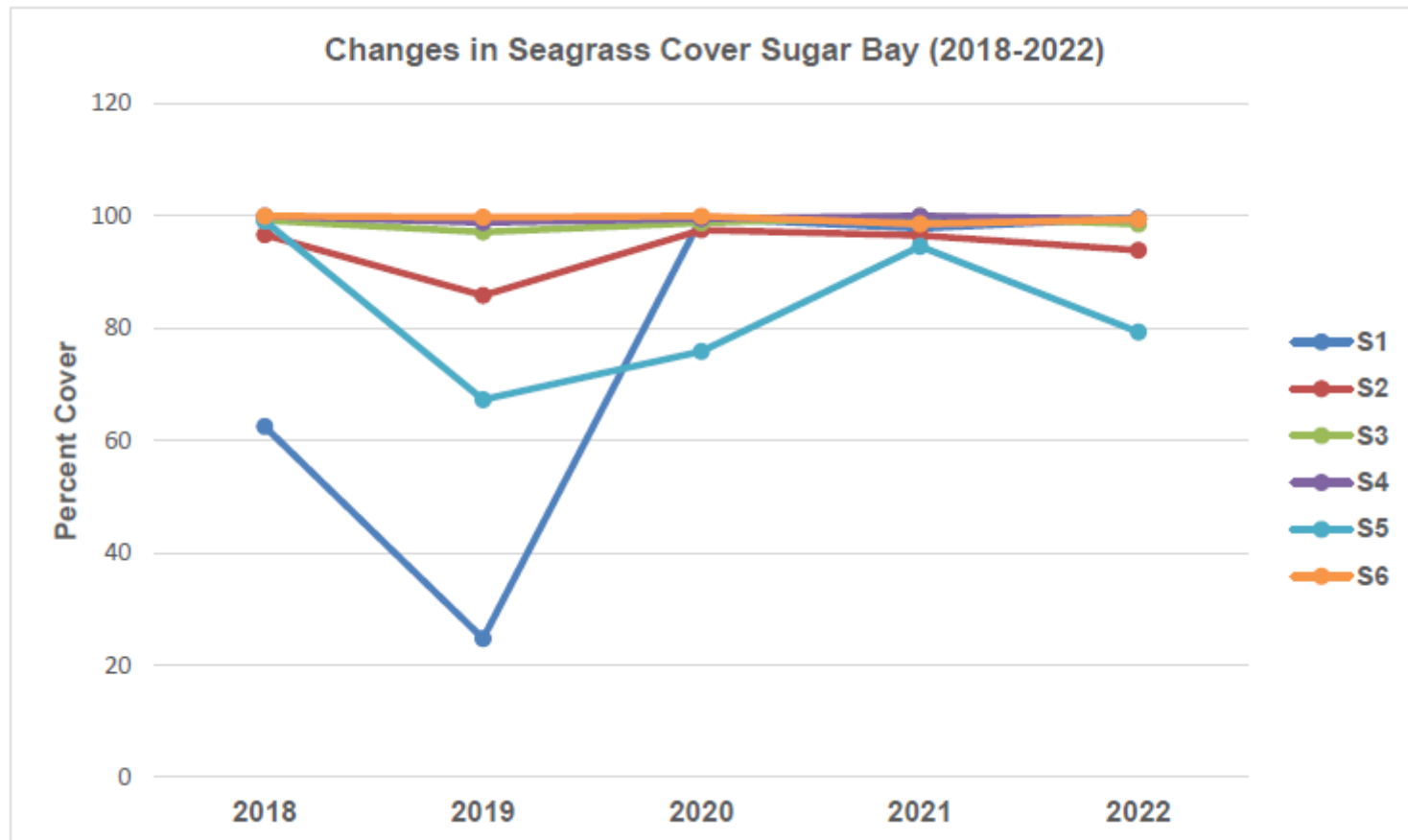
ENVIRONMENTAL PERFORMANCE



ENVIRONMENTAL PERFORMANCE



ENVIRONMENTAL PERFORMANCE



Community Complaints between 1 August and 31 October 2022:

- Chain Valley Colliery - Nil community complaints received in period.
- Mannering Colliery - Nil community complaints received in period.

General Enquiries between 1 August and 31 October 2022:

- Delta Coal received one general enquiry regarding subsidence monitoring from a fore-shore resident of Summerland Point regarding if the surveyors the resident had seen on the foreshore were related to subsidence monitoring. Delta Coal contacted the resident by phone, who was satisfied with the response and foreshore monitoring undertaken by Delta Coal.

ENVIRONMENTAL PROJECTS



- Pit-top clean-up has continued with environmental groundsmen.
- CVC car park sealed
- CVC Sewer project, delays due to transfer of land from Crown Lands to Central Coast Council for the portion of works below Tall Timbers Road, Delta Coal was advised this would take approximately 6-8 weeks to transfer.

QUESTIONS